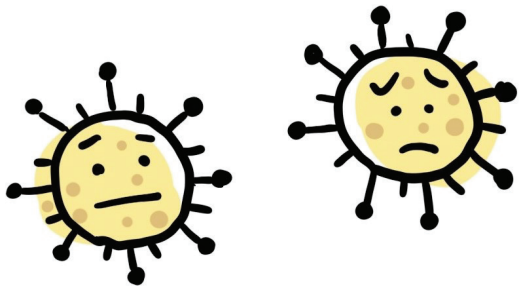


TRAVEL POLICY



Fully Vaccinated:

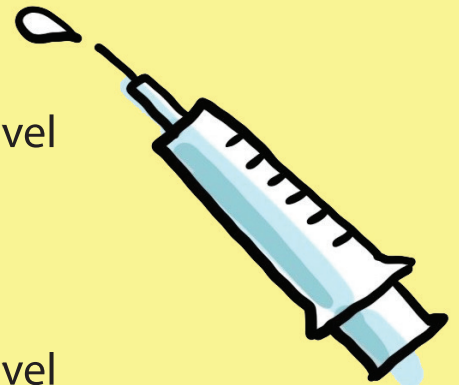
(Students are considered fully vaccinated two weeks after their second dose.)

Out-of-state Travel

- Self-monitor for symptoms
- Wear a mask and take other precautions during travel

International Travel

- Get tested 3-5 days after travel
- Self-monitor for symptoms
- Wear a mask and take other precautions during travel



Unvaccinated/one dose:

Out-of-state and International Travel

- Get tested 3-5 days after travel **and** quarantine for 7 days after travel
- **OR** quarantine for 10 days after travel without a test
- Self-monitor for symptoms
- Wear a mask and take other precautions during travel

